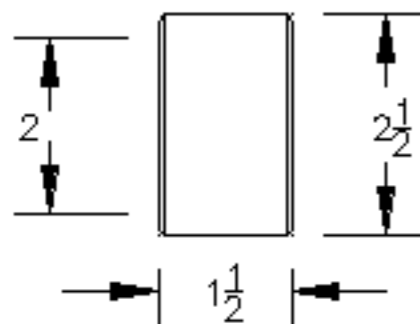


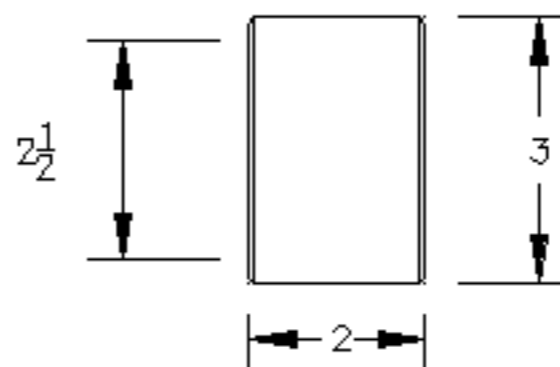
150 PLOW BUSHINGS



BRONZE
PART # 3252-0001

SPLIT STEEL
PART # 3252-0012

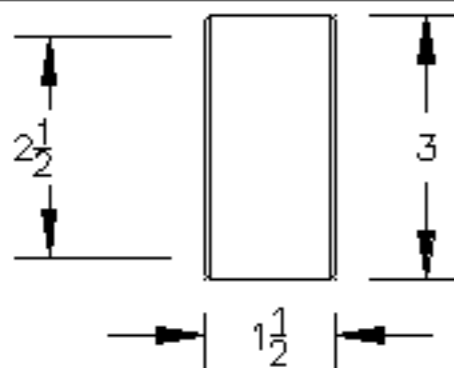
(4) BACKPLATE SWING CYLINDER MOUNTS



BRONZE
PART # 3252-0005

SPLIT STEEL
PART # 3252-0009

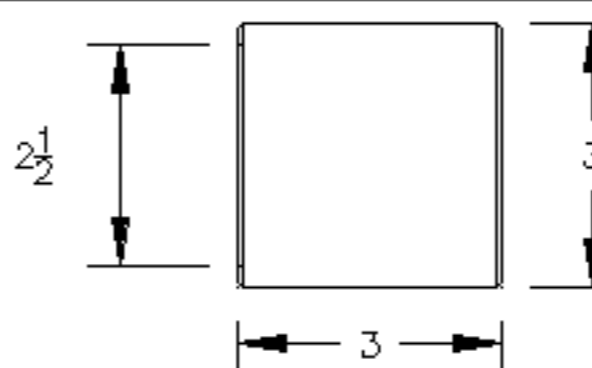
(2) LIFT CYL. HOUSING SWIVEL MOUNTS
(2) REAR SWIVEL HEAD SWIVEL MOUNTS



BRONZE
PART # 3252-0003

SPLIT STEEL
PART # 3252-0008

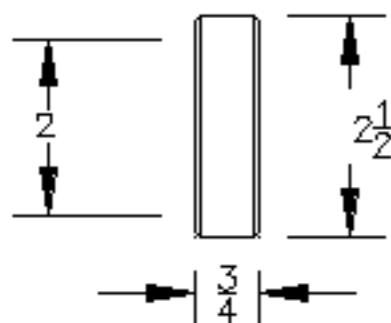
(4) BACKPLATE SWIVEL MOUNTS
(4) LIFT CYLINDER HOUSING BOSSES
(4) REAR SWIVEL HEAD BOSSES
(4) SHAKER BOX SWIVEL MOUNTS



BRONZE
PART # 3252-0002

SPLIT STEEL
PART # 3252-0014

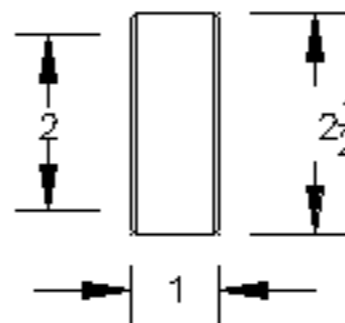
(2) UPPER PLOW ARM
(4) LOWER PLOW ARM



BRONZE
PART # 3252-0004

SPLIT STEEL
PART # 3252-0007

(8) LIFT CYLINDER HOUSING SWING CYL. MOUNTS
(8) REAR SWIVEL HEAD STEERING CYL. MOUNTS



BRONZE
PART # 3252-0006

SPLIT STEEL
PART # 3252-0013

(4) SHAKER BOX STEERING CYL. MOUNTS

OLDER EQUIPMENT USED SPLIT STEEL BUSHINGS. NEW EQUIPMENT USES BRONZE BUSHINGS. THEY ARE GENERALLY NOT INTERCHANGEABLE.

150 SIZE BUSHINGS ARE USED ON DT120C, DT130C, DT150C, DT175 AND DT190C CABLE PLOWS.

DELTA  DELTA EQUIPMENT, LLC
3000 SIDNEY LANIER DRIVE (912) 264-1553
BRUNSWICK, GA 31525 FAX (912) 264-1503